



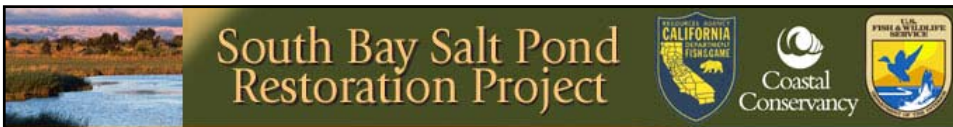
South Bay Salt Pond Restoration Project

Eden Landing Working Group Meeting

Hayward Area Shoreline Interpretive Center

February 28, 2008

1

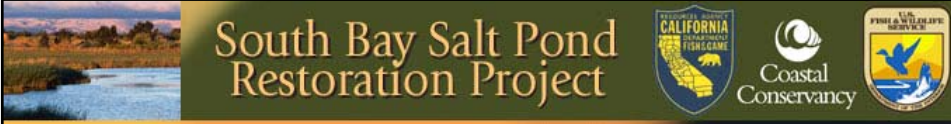


South Bay Salt Pond Restoration Project

Today's Working Group Meeting

- Welcome and Introductions
- Review adopted WG Charter/protocols
- Status report on the final EIS/R
- Phase 1 actions and applied studies
- Update on related Alameda County activities
- Funding Opportunities
- Schedule and Upcoming Permit Activities
- Next steps/next meeting

2

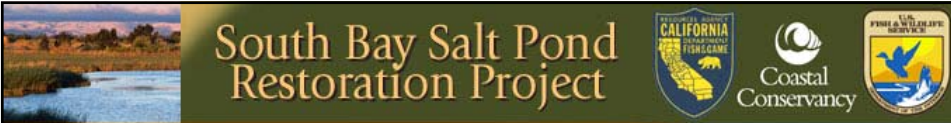


South Bay Salt Pond Restoration Project

Eden Landing Working Group Charter

See Handout

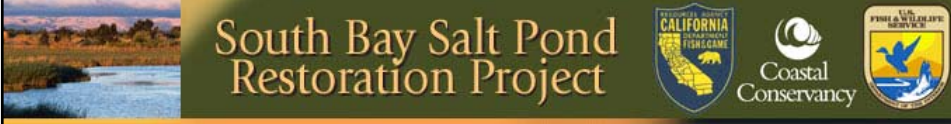
3



South Bay Salt Pond Restoration Project

Final EIS/EIR and Overview of Changes

4



Basic Elements of Final EIS/R

- Project approach is unchanged.
- Alternatives B (50:50) and C (90:10) have only minor changes.
- Phase 1 has only minor changes.
- Funding has been and will continue to be key to implementation.

3,395 pages

5



Major Comment Areas (from 114 total commenters)

- Relationship to the South San Francisco Bay Shoreline Study;
- Scope of the EIS/R;
- Preferred Alternative;
- Adaptive Management Plan Funding;
- Aircraft Bird Strikes;

6



Major Comment Areas (continued)

- Public Access and Impacts to Wildlife;
- Wildlife Impact Significance Thresholds;
- Flooding;
- Impacts of Sea Level Rise;
- Hunting; and
- Invasive Spartina and Other Invasive Species.

7

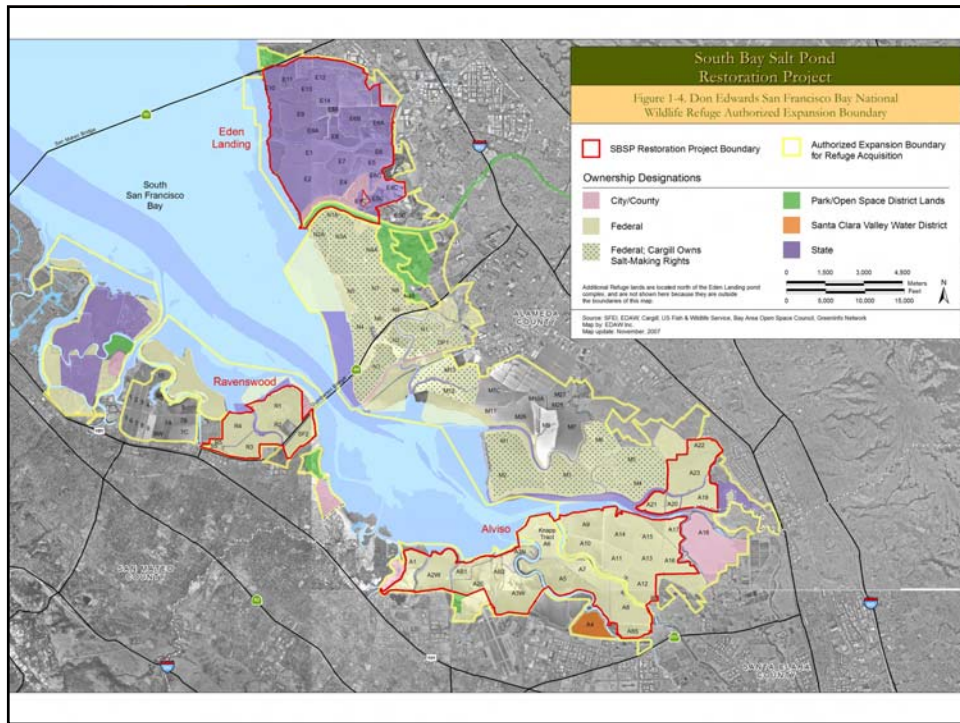
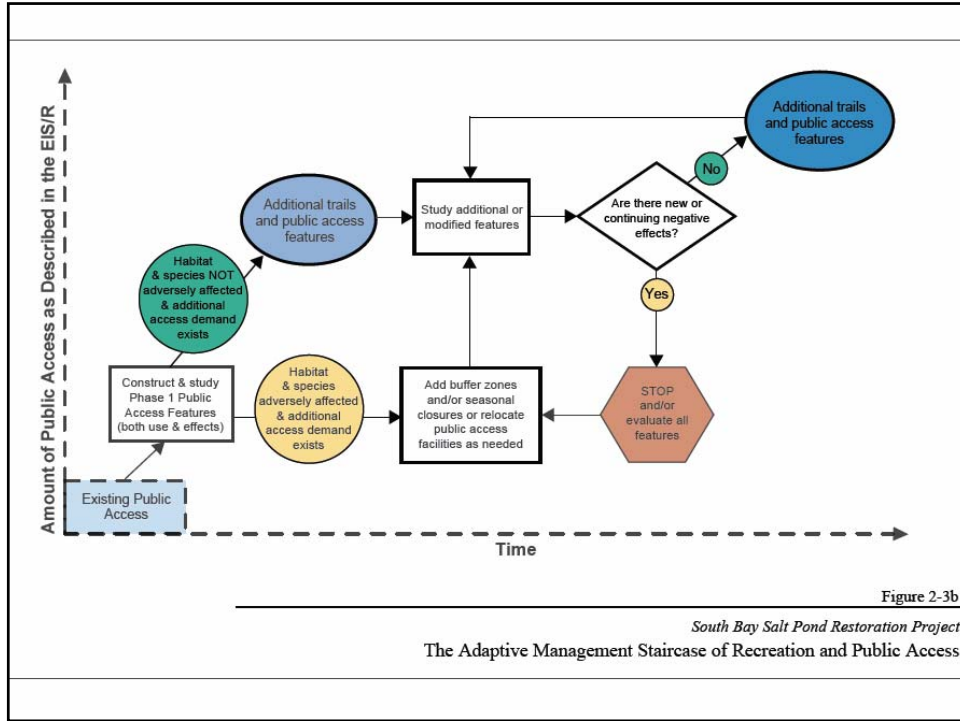


Changes in Final EIS/R

- The Corps no longer a co-lead agency.
- A Public Access Adaptive Management staircase diagram added.
- A figure displaying the DESFBNWR acquisition area included.

8

Eden Landing Working Group

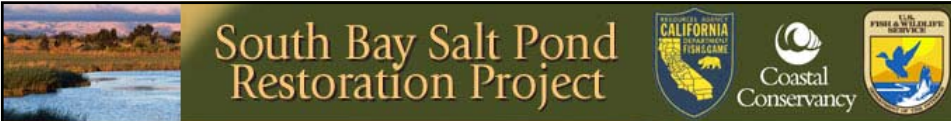




Other Changes in Final EIS/R

- PG&E facility modifications that are needed because of restoration will be incorporated into the Project.
- A preferred alternative, Alternative C, has been identified for legal reasons, but the document re-emphasizes the Adaptive Management nature of the Project.
- Invasive Spartina best practices included.

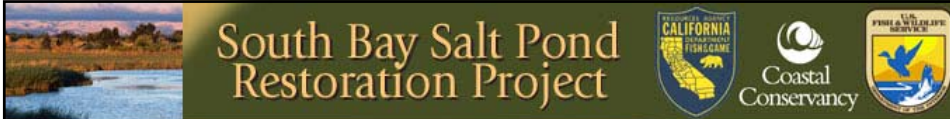
11



Comments on Final EIS/R

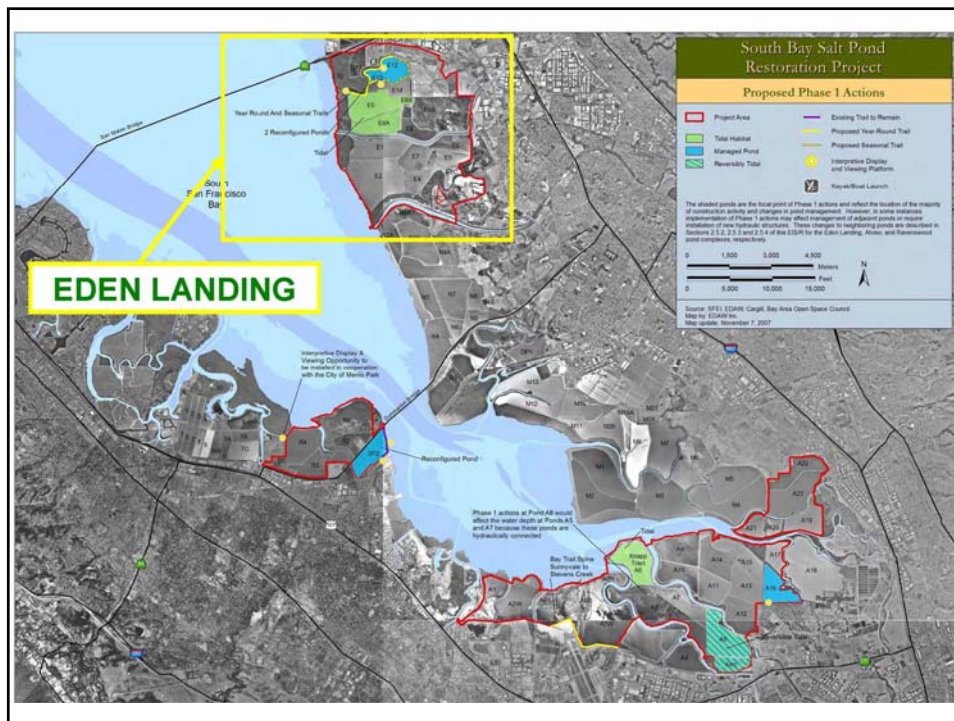
- Six comment letters
- Posted on the Project website

12

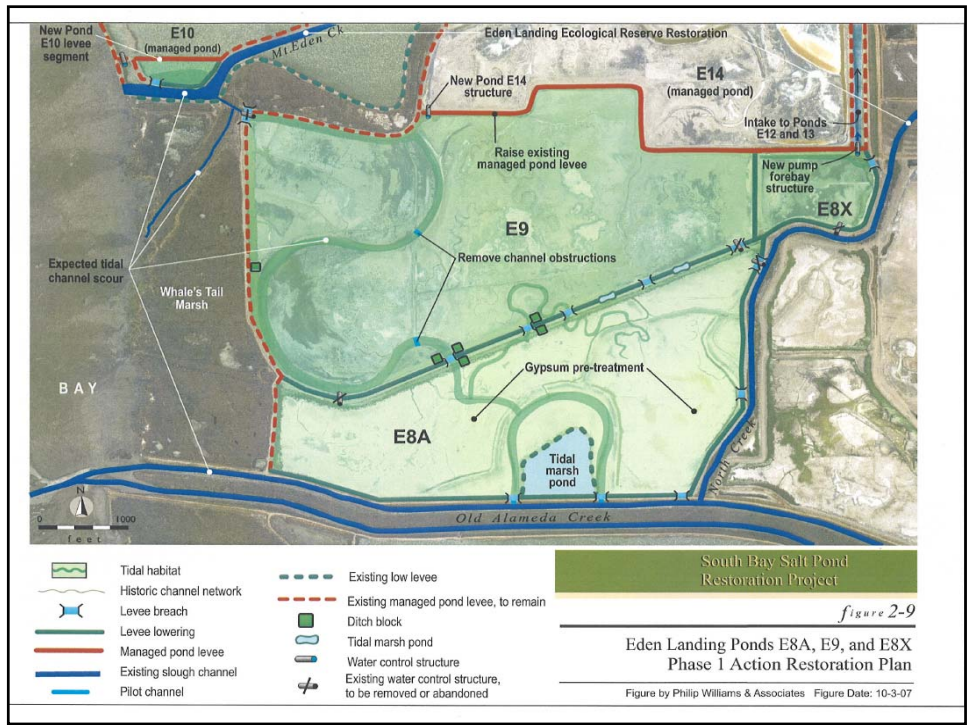
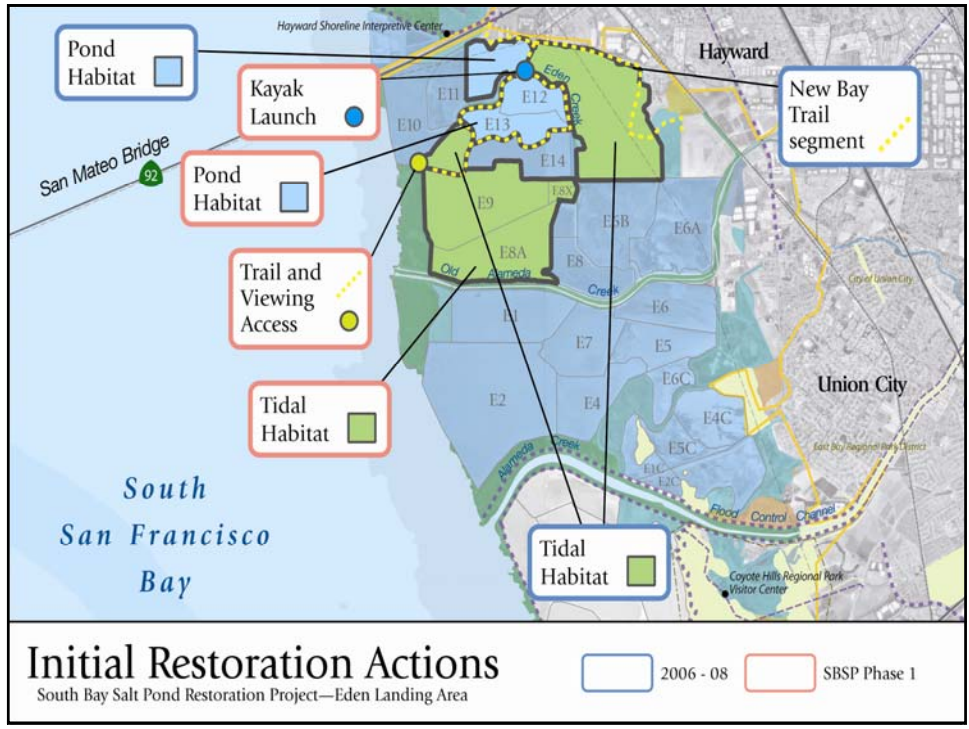


Phase 1 in the Eden Landing Complex: Actions and Applied Studies

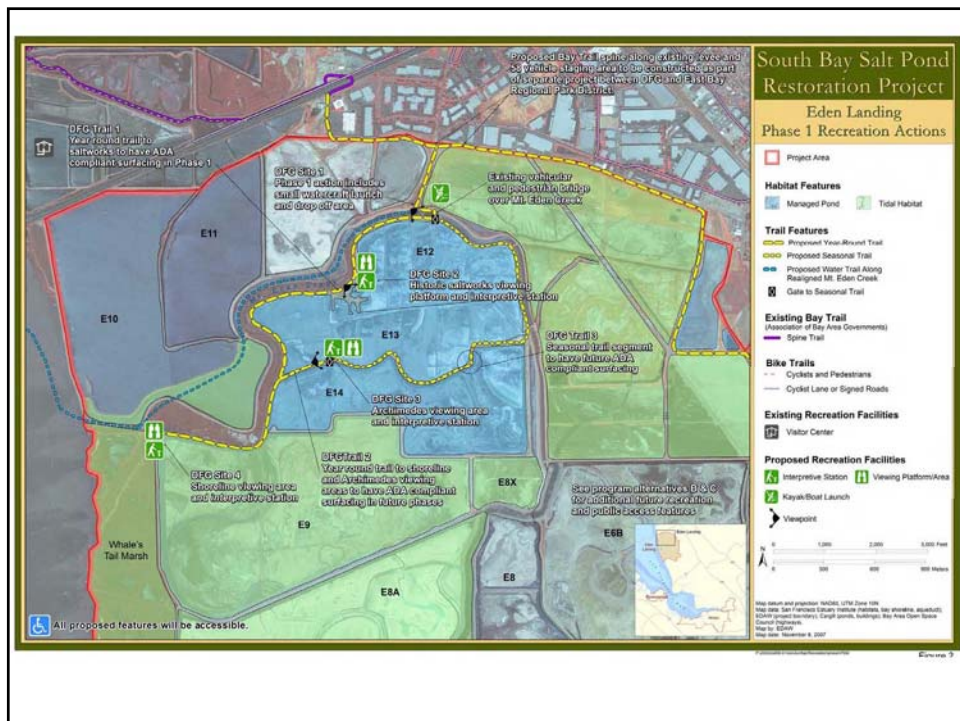
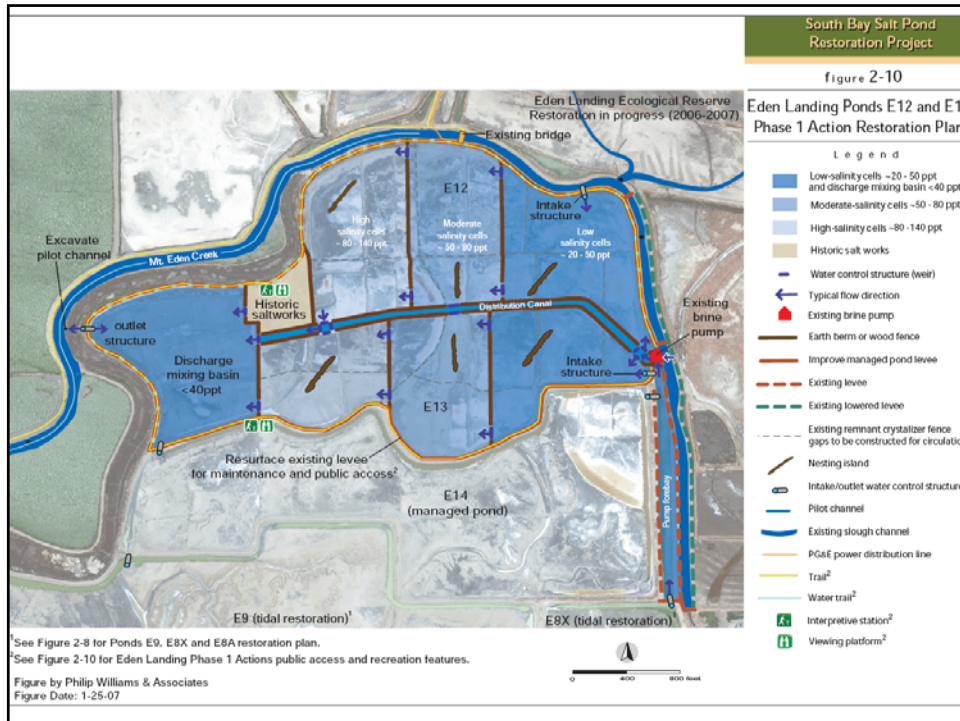
13



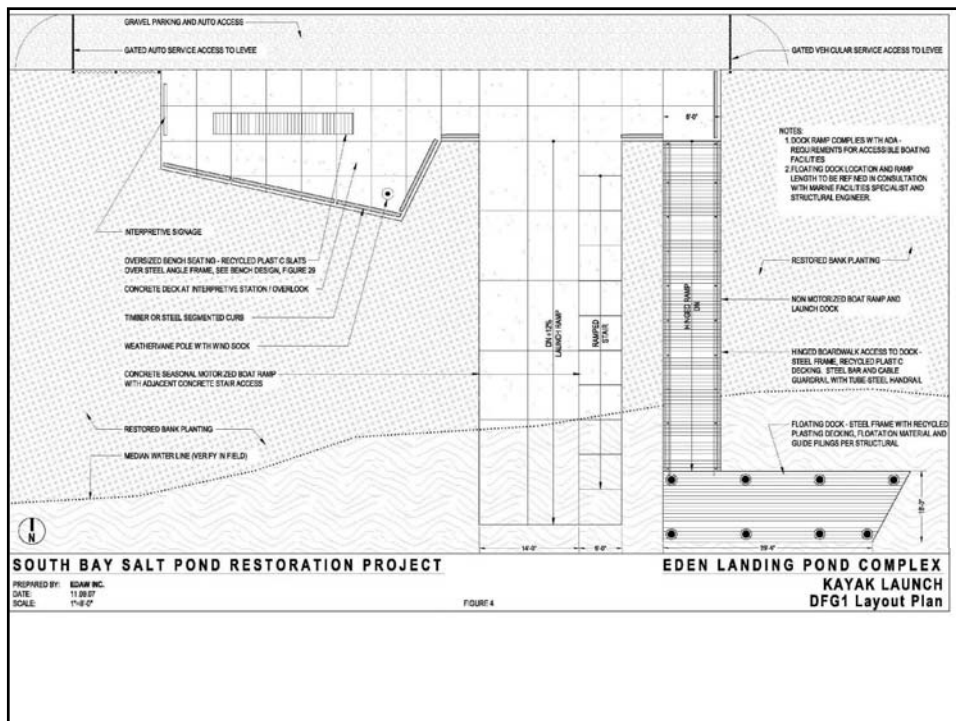
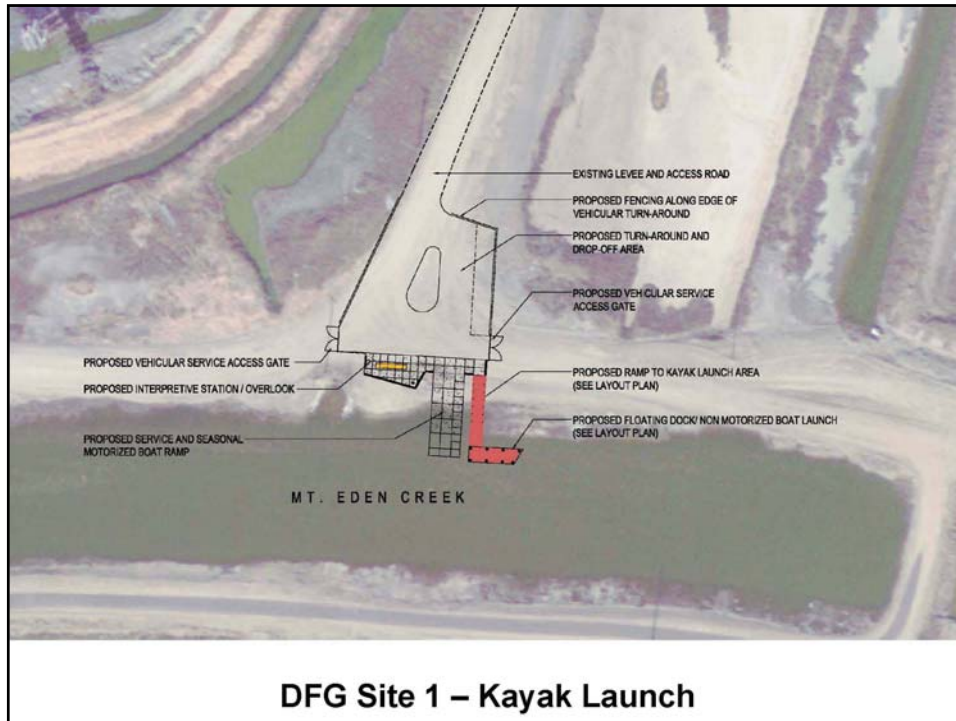
Eden Landing Working Group



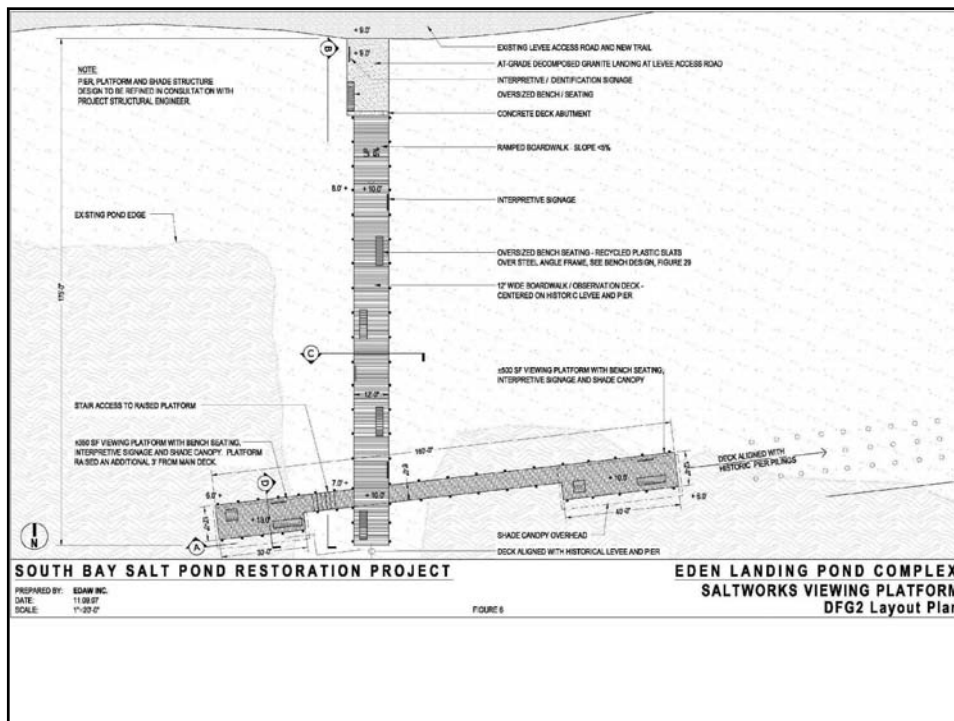
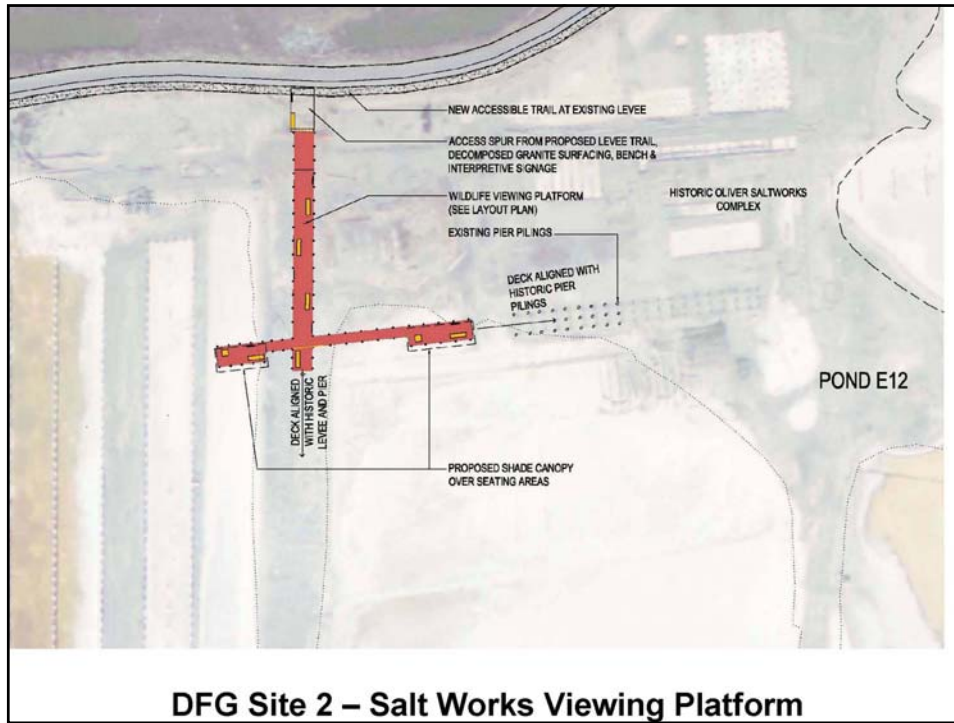
Eden Landing Working Group



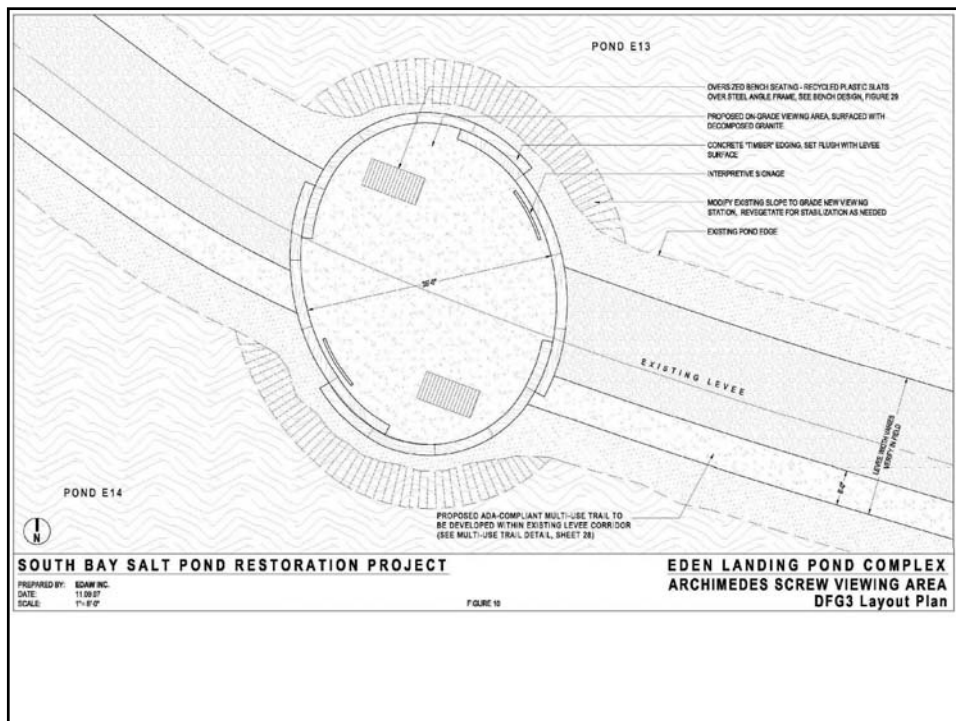
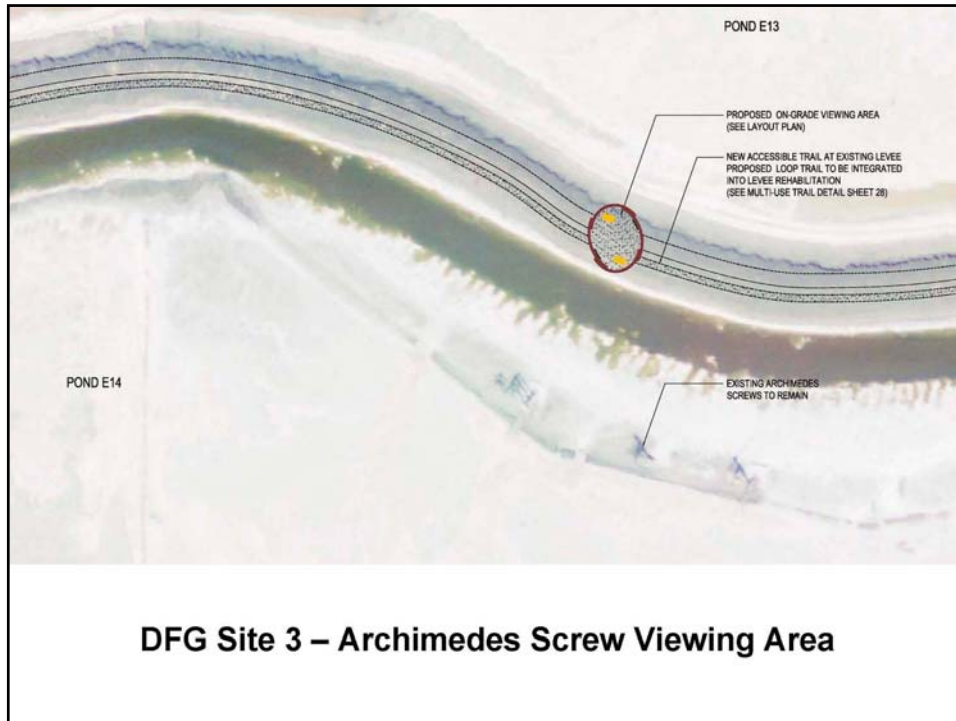
Eden Landing Working Group



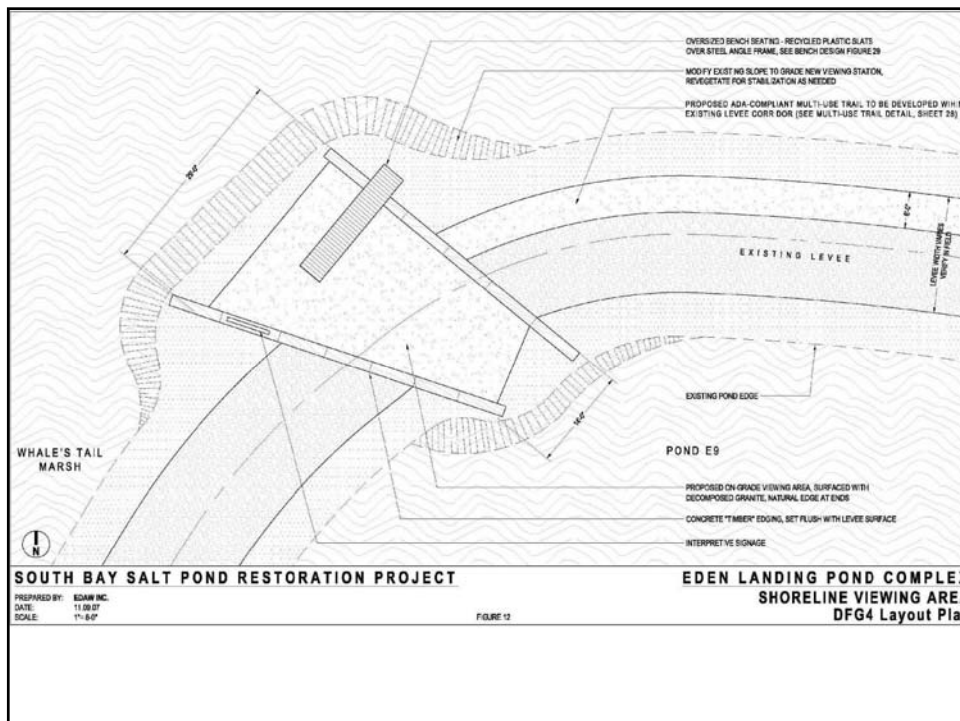
Eden Landing Working Group

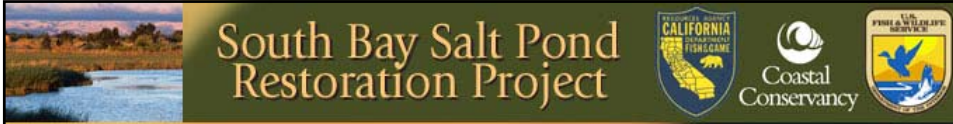


Eden Landing Working Group



Eden Landing Working Group





South Bay Salt Pond Restoration Project




Questions?

27

Improving Eden Landing Flood Management Through Integration with the South Bay Salt Pond Restoration Project

Part I – Alameda Creek Flood Control Channel

Part II – Flood Control Levee Alignment / Feasibility



Presented by: Vince Geronimo, PE, CFM²⁸

Eden Landing Working Group

PWA Eden Landing Projects Include:



- **Alameda Creek Flood Control Channel**
- **Flood Control Levee Alignment/Feasibility**
- SBSP Integration & Coordination
- Old Alameda Creek - SBSP Phase 1 Project



PART I Alternatives for Improving Flood Conveyance for ACFCC



- ACFCC Major flood control facility
- Drains ~700 sq miles
- Federal (USACE) Project
- Conveyance capacity reduced by sedimentation
- Design SBSP interface to optimize flood performance*


30


Eden Landing Working Group

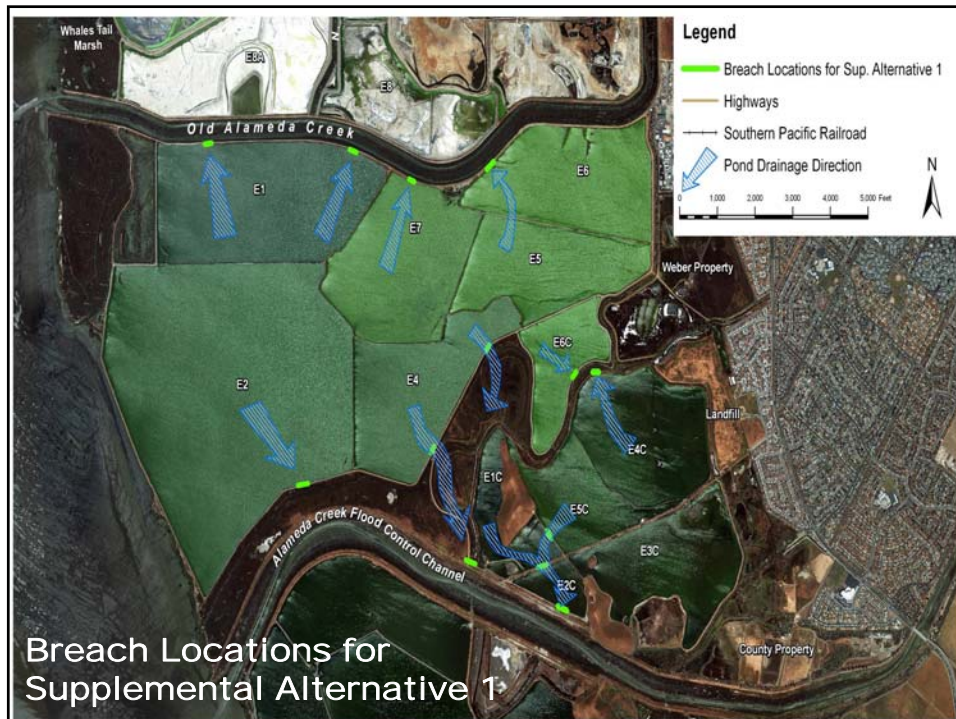
Alameda Creek Flood Control Channel Eden Landing Hydrodynamic MIKE Model

- Primary tool for alternatives analysis
 - Breach location/sizing
 - Levee lowering
- Simulates the interaction of creek flows and Bay tides

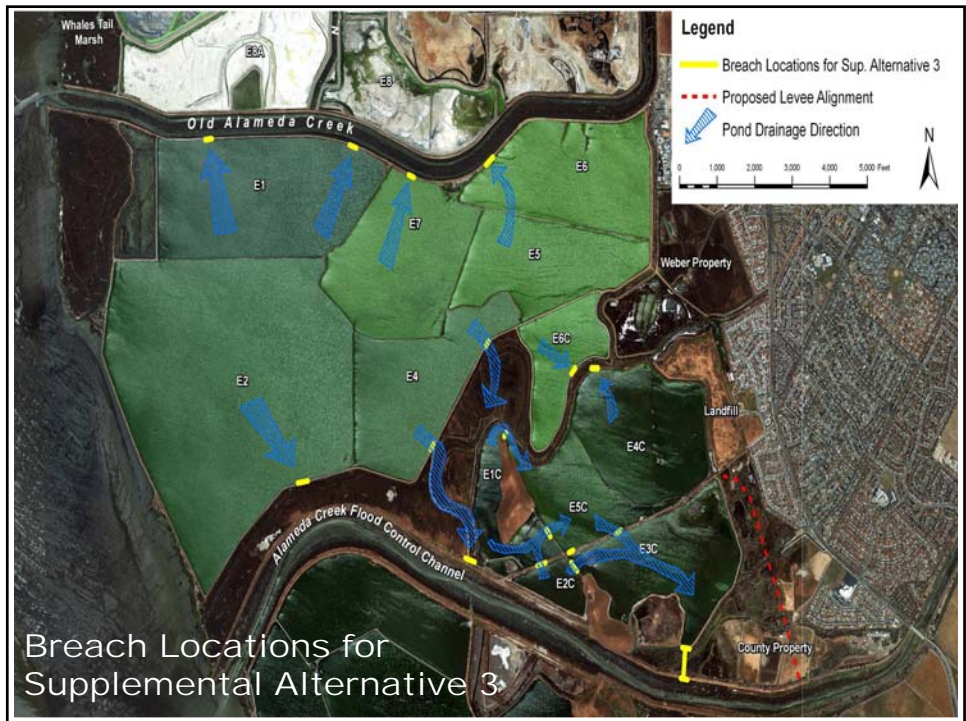
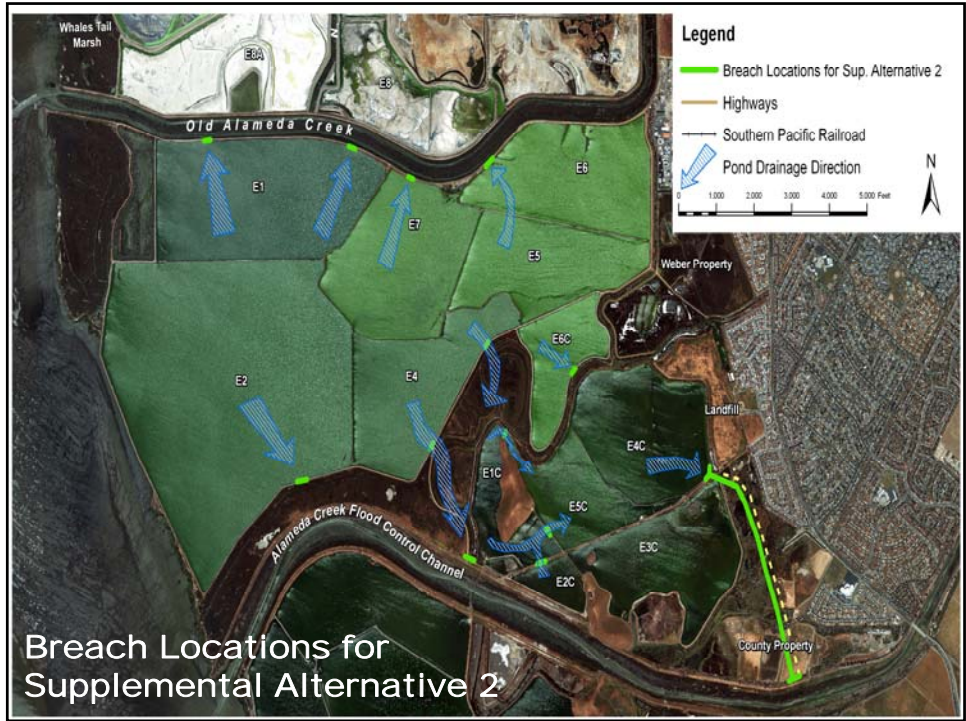
- Evaluate Alternatives
 - ACFC&WCD Flood management priorities & Pond E3c Issues
 - Hydrodynamic modeling – Baseline, Short-term, & Long-term
 - Long-term geomorphic evolution – In Context of SBSP Restoration





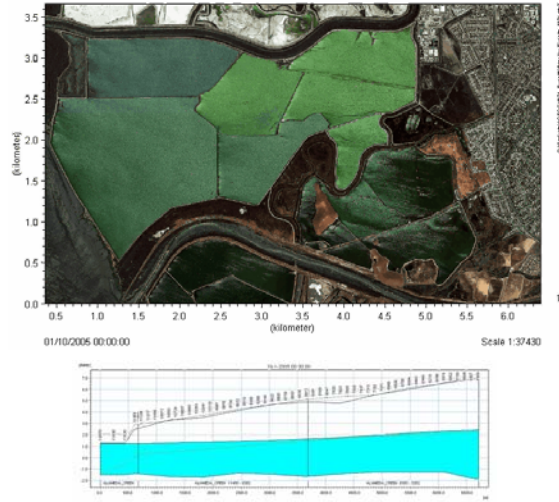


Eden Landing Working Group

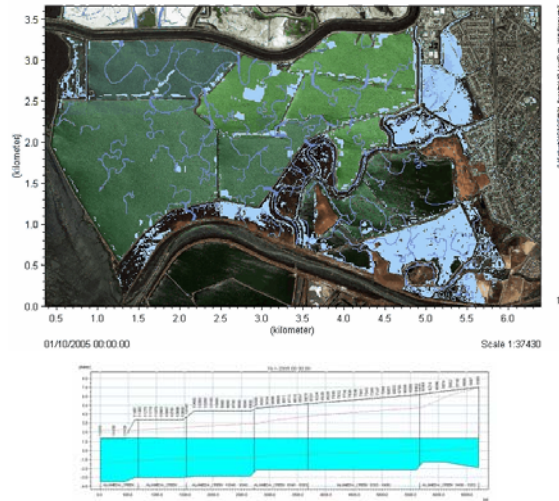


Eden Landing Working Group

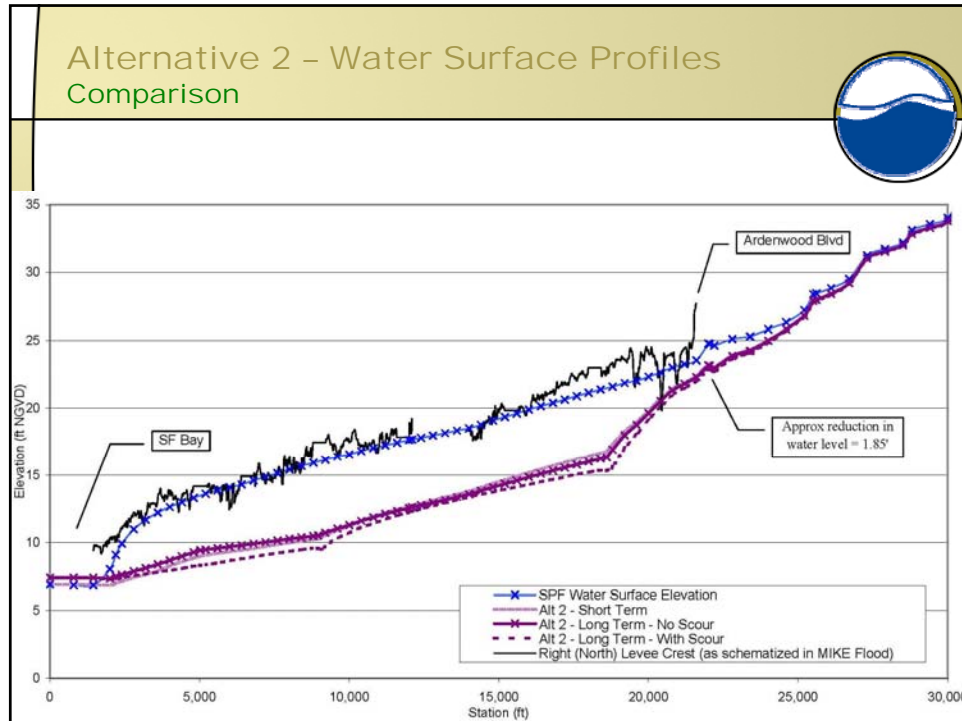
Baseline Conditions Model – Results (movie)



Long-Term “Most Likely Case” Model – Alternative 2 Results



Eden Landing Working Group



PART I


ACFCC Model Results - Summary

- Alternatives Evaluation
 - Water Surface Profiles
 - OAC Increases (Downstream of Tide Gates)
 - ACFCC Decreases
 - Ponds E6A, E6B, E8 (flood storage)
- Alternative Selection Process
- Conceptual Design
- Final Report


38

PWA


PART II
Eden Landing Perimeter Levee




- Project Coordination
- Levee Alignment
- Configuration
- Interior drainage
- Phasing
- Access



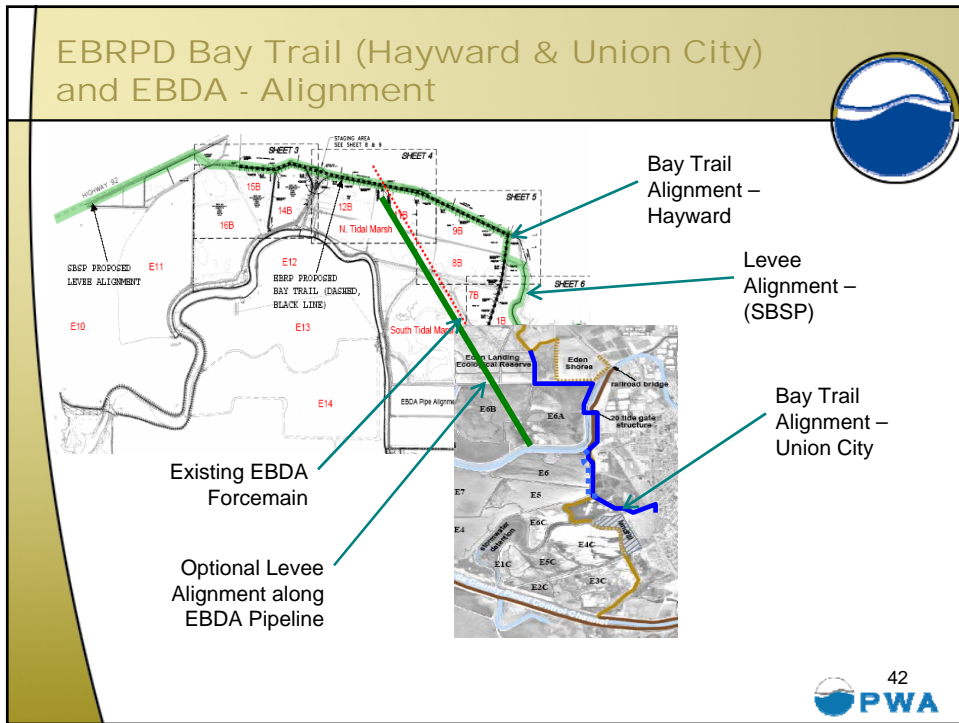
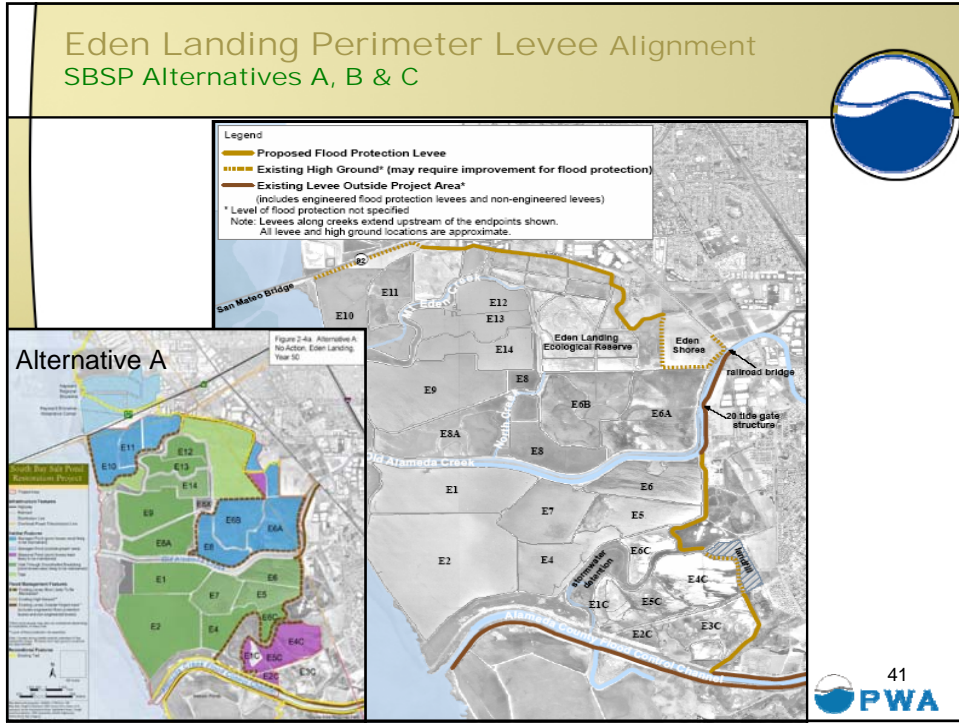
Eden Landing Perimeter Levee
Project Coordination



- SBSP Project - Eden Landing Alignment
- Bay Trail – Hayward Alignment (Out to Bid)
- EBDA – Levee Alignment Alternative
- Bay Trail – Union City Conceptual Alignment
- USACE - Shoreline Study
- FEMA - SF Bay FIS Coastal Re-study
- ACFCC Conceptual Design – Preferred Alternative Levee Alignment



Eden Landing Working Group



Eden Landing Working Group

Levee Transects - Conceptual Design

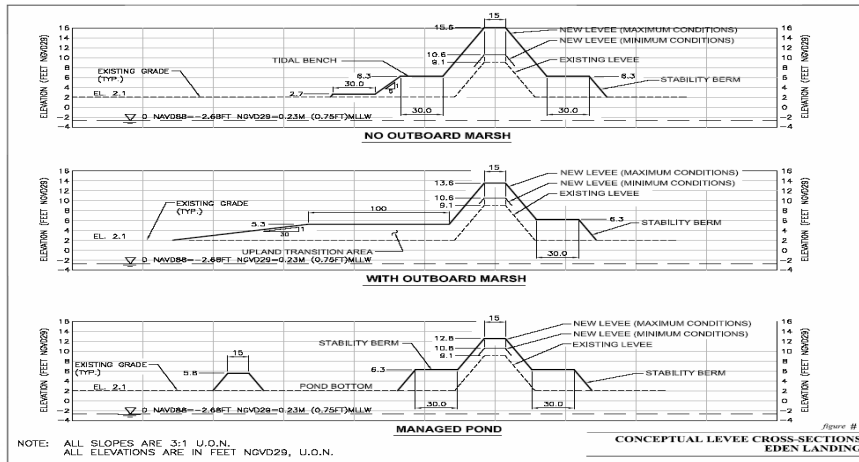


Figure #1

CONCEPTUAL LEVEE CROSS-SECTIONS
EDEN LANDING



Eden Landing Perimeter Levee - Additional Assessment -



- Determine Interior Drainage Needs
- Geotechnical Preliminary Assessment to Set Levee Criteria and Dimensions
- Determine Appropriate Coastal Water Level Criteria (SBSP, USACE, FEMA)
- Construction Phasing
- Access



Eden Landing Working Group

Thank You.

Questions?

PWA
PHILIP WILLIAMS & ASSOCIATES, INC.
CONSULTANTS IN HYDROLOGY

South Bay Salt Pond Restoration Project

Funding Opportunities

- Wildlife Conservation Board
- Coastal Wetlands Grant
- NFWF Grant (leopard shark)
- Alameda County
- CIAP Grant
- Coastal Conservancy grant(s)

46



Eden Landing Phase 1 Schedule

- BCDC – First Design Review Board December 10; Second Design Review Board March 11
- BCDC and Water Board hearings – Late Spring 2008
- DFG Notice of Determination – Soon
- Phase 1 Design completion – 2008-09
- Start construction – Some elements Summer 2008

47



Next Steps

48